



KONICA MINOLTA



Giving Shape to Ideas

EMPOWERED  
WORK FLOW.  
ENHANCED  
COLOUR  
PRODUCTIVITY.



\*Optional



bhC759/C659 <b>75/65</b> ppm	 COPY	 PRINT
Scan <b>240</b> opm Duplex	Scan <b>120</b> opm Simplex	Resolution <b>1,200</b> dpi
SRA3	 Fax	USB Print
 SCAN TO USB	 MOBILE SUPPORT	 LINUX SUPPORT
 BIOMETRIC AUTHENTICATION	 mopria	 KMPS
 INFO-Palette	 IC-CARD AUTHENTICATION	BIO- PLASTIC
RECYCLED PC/PET	RoHS COMPLIANCE	WEEE COMPLIANCE
MANUFACTURED AT ISO CERTIFIED FACTORIES	 SAP® Printer Vendor Solution	 CITRIX®

Simitri  
*with Biomass*

**bizhub**  C759/C659

Speedy Input/Output of High Volume Jobs

Easy-to-see, Easy-to-use 10.1 inch Panel

The large 10.1 inch panel ensures quick and easy operation. The interface helps to reduce operational errors, this user-friendly panel enhances everyday work.



**Top Menu**  
Customisable to match applications.

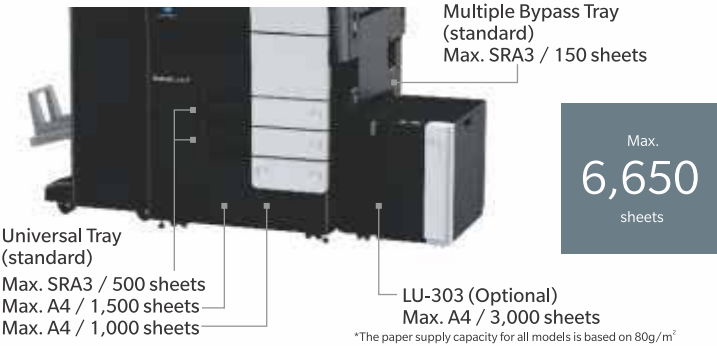
**Widget Function**  
Enables transmission of messages using the operation panel.

**Hard registration keys**  
Register up to 4 commonly used function.

Plenty of Paper Feed Options

The standard paper capacity of the MFP is 3,650 sheets. The optional Large Capacity Unit will bring the maximum of 6,650\*1 sheets to reduce overall MFP downtime caused by paper replenishment.

\*1 When optional Large Capacity Unit LU-303 are mounted.



Optional Finishers

A variety of finishers is available to enable advanced post-processing including stapling and punching in various patterns, saddle-stitching, 2 folding, etc.

Faster Printing Speed

The top-of-the-class scanning and output speed\*1 of this high-end colour MFP enables high input and output productivity to meet the sophisticated needs of large offices requiring high-volume output.

\*1 Printing speed for C759: 65/75 sheets, C659: 65/65 sheets (Colour/Black&White, A4 horizontal)

Faster Scanning Speed and Precise Outputs Create Smooth Workflow

The ADF features a 300-sheet paper holding capacity and impressive duplex 240 ipm (120 sheets for double-sided) scan speed. Its high productivity supports business efficiency and speed, while its instant scanning and copying meets customers' high-volume needs. An error message appears when double feeding is detected\*1. The scanned document can be previewed on the screen to determine where scanning should be resumed.

\*1 Optional Double feed detection Kit UK-501 is required.

Max. 300 sheets	Simplex 120 ipm	Duplex 240 ipm
-----------------------	-----------------------	----------------------

\*When A4 landscape at 300dpi

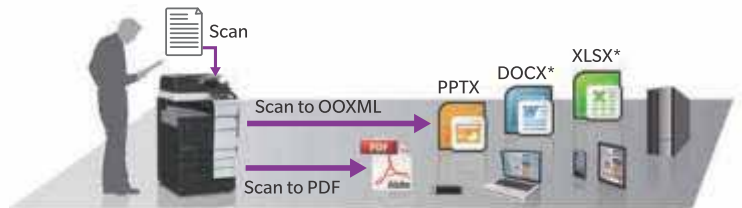


Hardcopy Digitisation

Scanned hardcopies can be saved as searchable PDFs\*1 or editable files in the PowerPoint, Excel or Word format\*2. The files are small with excellent image quality and can be saved in the internal HDD or mobile devices.

\*1 Optional i-Option LK-105 v4 or LK-110 v2 is required.

\*2 Editable Excel/Word formats require optional i-Option LK-110 v2.



\*Optional  
Optional Finisher  
A variety of finishers is available to enable advanced post-processing including punching and stapling, in various patterns, saddle stitching, etc.

PCs, servers, mobile devices, USB memory devices, etc.

Easy connectivity

Connect with Mobile Devices

Enjoy a flexible mobile work style by using bizhub C759/C659 together with iOS, Android and Windows 10 mobile devices. Users can take advantage of printing and other bizhub features through these favourite industry standard mobile technologies.

Convenient Mobile Touch Area

Bizhub C756/C659 has a Mobile Touch Area on the operation panel with embedded NFC(Near Field Communication) technology. NFC ensures smooth, quick connections through which you can pair Android mobile \*1 devices by simply holding them close to the Mobile Touch Area. This can also be used to log in, print files, scan \*2 documents and import scanned data. iOS devices can be paired using \*3 Bluetooth LE (BLE).

\*1 Android OS 4.4 or higher and Konica Minolta Mobile Print must be installed.

\*2 Initial setup required for logging in. Wireless LAN environment required for printing and scanning.

\*3 Optional Device Connection I/F Kit EK-609 is required.



Wireless LAN\*

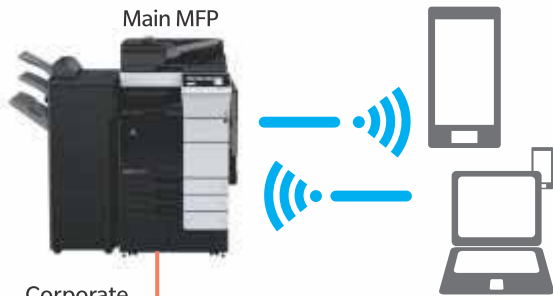
Wi-Fi Direct allows computers and mobile devices in your office to wirelessly connect with bizhub C756/C659. This creates a fully independent network that supports BYOD (bring your own device) without additional investment. If your office already uses a wireless corporate LAN, bizhub C756/C659 can easily connect with it to offer advantages to everyone in the office.

\* Optional Upgrade Kit UK-215 is required.

QR code display screen



AP mode and Simple AP mode (Wireless LAN)








Up to 4 devices can access bizhub 658e/558e/458e simultaneously in Simple AP mode when equipped with UK-215.

bizhub Remote Access

The bizhub Remote Access app allows operation of bizhub C759/C659 from Android devices and iPhone/iPad/iPod touch. Users can wirelessly operate bizhub hardware and software keys, enter data, import scanned data, send data from bizhub C759/C659 using the mobile device's address book and more.

Connect instantly without print drivers to industry standard mobile technologies

	iOS	Android	Windows 10 Mobile
<div></div> <div><b>AirPrint</b> Print from any compatible printer on your company's wireless LAN using AirPrint, Apple's standard printing system. It is compatible with iOS 4.2 and Mac OS 10.7 or later.</div>	✓	Corporate LAN	
<div></div> <div><b>Mopria Print Service</b> This wireless printing technology provides a universal print driver for printing from devices installed with Android 4.4 or later.</div>		✓	
<div></div> <div><b>Google Cloud Print</b> Leading technology connects bizhub C759/C659 with the web so users can print from anywhere outside the office regardless of OS, device or application.  Note: Google Cloud Print Setup and Google account registration are required.</div>	✓	✓	
<div></div> <div><b>Konica Minolta Print Service</b> This application enables printing directly from devices running Android 4.4 or later through your company's wireless LAN.</div>		✓	
<div></div> <div><b>Konica Minolta Mobile Print</b> Connect mobile devices with bizhub C759/C659 via Wi-Fi to print documents and images as well as import scanned data.</div>	✓	✓	✓

Fully Reliable Security for Confidentiality

Easy Authentication

Smooth and efficient authentication by means of password, IC card and biometric (finger vein) authentication are supported. In addition to regular authentication via server, server-free authentication can also be performed directly on the main unit with detailed control of access to each function, including copying, printing, scanning and faxing. These features complement your company's existing security measures to protect important data and hardcopy resources, prevent unauthorised bizhub access and strengthen risk management.

IC card authentication

Authentication is possible with various types of IC card. First command bizhub C759/C659 to print from a PC or mobile device. Then wave the ID card over a card reader on bizhub C759/C659 to print. Authentication can also be performed with any Android device\* equipped with an NFC antenna.



\*Requires Android 4.4 or later that supports HCE (Host Card Emulation) or Konica Minolta Mobile Print.  
Notes: Optional Authentication Unit AU-201S is required. Compliant non-contact IC cards include FeliCa (Idm), SSFC, FCF, FCF (campus), FeliCa Private and MIFARE (UID).

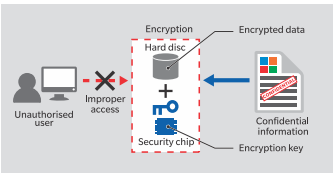
Biometric Finger-vein Authentication



Finger vein biometric authentication is easy to implement and makes forged access virtually impossible. After commanding bizhub C759/C659 to print from a PC or mobile device, the authorised user just scans his or her finger at bizhub C759/C659 to print.  
Note: Optional Biometric Authentication Unit AU-102 and Working Table WT-506 are required.

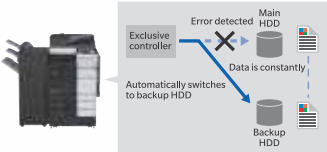
TPM (Trusted Platform Module)

Confidential information such as certificates and passwords can be securely managed in bizhub C759/C659. Just activate the TPM function to encrypt the information and save it in a dedicated storage area in the TPM security chip. This prevents unauthorised reading from external devices.



\*Optional i-Option LK-115 v2 is required.

HDD Mirroring\*



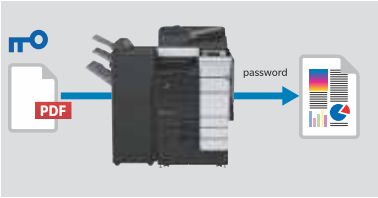
This feature ensures that all data saved on the main HDD is always saved on a backup HDD as well. If the main HDD fails, bizhub C759/C659 automatically switches to the backup HDD to prevent operational downtime and data loss.

\*Optional HDD Mirroring Kit HD-524 is required.

PDF Password Protection

When saving scanned data as a PDF file, the data can be encrypted to prevent opening of the file unless the user inputs the correct password. The user can also encrypt the PDF with his or her digital certificate, create a PDF/A-based PDF file\* and add file properties.

\*Optional i-Option LK-102 v3 or LK-110 v2 is required.



Compliance with Industry Standards\*

This model meets IEEE 2600.1 international protection profile standards, ensuring a high level of document security. All security features have been independently evaluated and certified ISO 15408 EAL3 compliant.  
\*Application is still pending as of September 2017.

Versatile Features

Auto Trapping



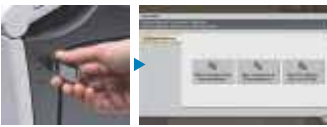
This feature is to eliminate gaps between text and background by overprinting where two or more colours meet. Both PS and PCL print driver can be used. Texts become more legible.

Banner Print\*



Create appealing Promotional Materials in-house on bizhub C759/C659 through the banner print feature that enables you to Print on long paper (upto 1,200mm) from by Pass tray.

USB port



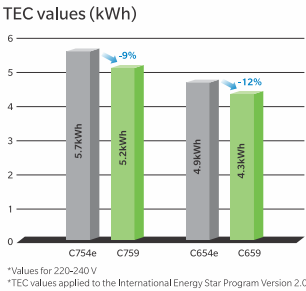
The USB port allows transferring of files to and from bizhub C759/C659 via flash drive. Once a file is stored in bizhub C759/C659, it can be used to output documents or transferred to other devices.

Notes: Compatible with PDF, Compact PDF, JPEG, TIFF, XPS, Compact XPS, OOXML (docx, xlsx, pptx) files. Some USB flash drives may not be compatible. Print output may differ from what appears on the PC screen.

Minimal Environmental Impact

Low Power Consumption

bizhub C759/C659 minimises energy use during normal operation. It easily clears the latest Energy Star Program TEC standards and reduces both CO2 emissions and TCO.



Sleep Mode

bizhub C759/C659 automatically switches to sleep mode after a user-defined period of inactivity. This mode reduces power consumption to a mere 0.5W by cutting off power to the CPU. When users want to use bizhub C759/C659 again, it switches back to full power in seconds.

Eco-friendly Materials

Approximately 64% of the outer surfaces and 30% of the weight of resin parts on bizhub C759/C659 consist of recycled materials. This includes PC/PET developed by Konica Minolta using advanced chemical processing technology. 70% of PC/PET on outer surfaces is PCR (post-consumer recycled).





Specifications

Printer Specifications
Print resolution: 1,800 (equivalent) x 600 dpi, 1,200 x 1,200 dpi
Page Description: PostScript 3 (3016) Emulation, PCL 6 (XL Version 3.0) Emulation, PCL 5e/c Emulation, XPS
Language: PCL 6 (XL Version 3.0) Emulation, PCL 5e/c Emulation, XPS
Operating systems: Windows 7 (32/64), Windows 8.1 (32/64), Windows 10 (32/64), Windows Server 2008 (32/64), Windows Server 2008 R2, Windows Server 2012, Windows Server 2012 R2, Windows Server 2016, Macintosh OS X 10.8 or later, Linux, Unix,
Printer fonts: 80 PCL, 137 PostScript 3 Emulation
Mobile printing: AirPrint (iOS), Mopria (Android), Google Cloud Print (optional), Wi-Fi Direct (optional), Konica Minolta Print Service (Android), Konica Minolta Mobile Print (iOS, Android, Windows 10 Mobile)

Scanner Specifications
Scan speed: Simplex - 120 ipm (300 dpi), Duplex - 240 ipm (300 dpi)
Resolution: Max.: 600 x 600 dpi
Scan modes: Scan to Email, Scan to PC (SMB), Scan to FTP, Scan to WebDAV, Scan to BOX (HDD), Scan to WSD (Web Service), Scan to DPWS (Device Profile for Web Service), Scan to Scan Server, Scan to USB memory, Network TWAIN scan, Scan to Me, Scan to Home, Scan to URL
File formats: JPEG, TIFF, PDF, PDF/A-1a, PDF/A 1-b, compact PDF, encrypted PDF and searchable PDF, XPS, compact XPS, OOXML (pptx, docx, xlsx), Linearized PDF
Destinations: 2,100 (single + group), LDAP, PSDA support

When copying A4 or Letter (8-1/2 x 11)
Optional

Copier Specifications
Copying process: Electrostatic laser copy
Toner system: Simitri® HD Polymerized Toner
Copy/print speed A4: [C759] Colour: Up to 65 ppm, B/W: Up to 75 ppm, [C659] Colour: Up to 65 ppm, B/W: Up to 65 ppm
1st copy out time: [C759] Colour: 4.9 sec. or less, B/W: 3.6 sec. or less, [C659] Colour: 4.9 sec. or less, B/W: 3.7 sec. or less
Warm-up time: Colour: 35 sec. or less, B/W: 22 sec. or less
Copy resolution: 600 x 600 dpi
Gradation: 256 gradations
Multicopy: 1-9,999
Original format: A5-A3 or 11x17, Custom Size
Magnification: 25-400% in 0.1% steps, auto-zooming

System Overview
System memory: 4 GB (standard)
System hard disk: 250 GB (standard)
Interface: 10-BASE-T/100-BASE-TX/1,000-BASE-T Ethernet, USB 1.1, USB 2.0, Wi-Fi 802.11a/b/g/n/ac (optional)
Network protocols: TCP/IP (IPv4/IPv6), SMB, LPD, IPP, SNMP, HTTP
Frame types: Ethernet 802.2, Ethernet 802.3, Ethernet II, Ethernet SNAP
Automatic document feeder: Up to 300 originals, A6-A3, 35-210 gsm
Printable paper size: A6-SRA3, customised paper sizes, banner paper max. 297mm x1200mm
Printable paper weight: 52-300 gsm
Paper input capacity: Standard: 3,650 sheets, Max.: 6,650 sheets
Tray 1: 500 sheets, A5-SRA3, custom sizes, 52-256 gsm
Tray 2: 500 sheets, A5-SRA3, custom sizes, 52-256 gsm
Tray 3: 1,500 sheets, Postcards, A5-A4, 52-256 gsm
Tray 4: 1,000 sheets, Postcards, A5-A4, 52-256 gsm
Large capacity unit LU-303 (optional): 3,000 sheets, A4/Letter, 52-256 gsm
Large capacity unit LU-205 (optional): 2,500 sheets, A4/Letter - SRA3/Ledger, 52-256 gsm
Bypass tray: 150 sheets, Postcards, A6-SRA3, 12x18, banner, 52-300 gsm
Automatic duplexing: Postcards, A6-SRA3, 12x18, 52-256 gsm
Finishing modes (optional): Group, sort, staple, punch, output tray, booklet, centre fold, tri-fold in, Z-fold
Power consumption: [220-240 V, 50/60 Hz] less than 2.10 kW (system)
System dimensions: [W x D x H] 670 x 842 x 1,232 mm (26.4 x 33.1 x 48.5 inch)
System weight: Approx. 219.0 kg (482.8 lb)
Main Body: 204.4 kg (450.6 lb) + DF-703 (standard): 14.5 kg (32.0 lb)
Including Drum/Developer/Toner bottle

Fax Specifications (optional)
Fax: Super G3
Transmission: Analog fax, Internet fax, Colour Internet fax, IP address fax
Resolution: Max.: 600 x 600 dpi (ultra-fine)
Compression method: MH, MR, MMR, JBIG
Modem speed: Up to 33.6 Kbps
Destinations: 2,100 (single + group)

Components and Options
MK-715 Banner paper mount kit: Banner paper feeder
HT-508 Dehumidification heater: Dehumidification heater for Paper feed cabinet
OT-508 Output tray: Output tray used instead of finisher
FS-536 Staple finisher: 50-sheet stapling, tray1: max. 200-sheet output, tray2: max. 3,000-sheet output
FS-536SD Staple/booklet finisher: 50-sheet staple finisher, 20-sheet booklet finisher, tray1: max. 200-sheet output, tray2: max. 2,000-sheet output
PK-520 Punch kit: For FS-536/SD, 2/4 hole punching, Auto switching
FS-537 Staple finisher: 100-sheet stapling, tray1: max. 200-sheet output, tray2: max. 3,000-sheet output
FS-537SD Staple/booklet finisher: 100-sheet staple finisher, 20-sheet booklet finisher, tray1: max. 200-sheet output, tray2: max. 2,500-sheet output
PK-523 Punch kit: For FS-537/SD, Supports the Z-fold function
ZU-609 Z-folding unit: For FS-537/SD, Supports the Z-fold function
JS-602 Job separator: For FS-537/SD, Separation for fax output, etc.
PI-507 Post inserter: For FS-537/SD, Inserts cover sheets into the copied or printed sheets
RU-515 Relay unit: For FS-536/SD, FS-537/SD installation
SP-501 Stamp unit: Stamps a scanned original when sending a fax
UK-501 Double feed detection kit: For ADF, Multi-feed detector to reduce errors and paper jams
WT-506 Working table: Authentication device placement
WT-513 Working table: Working table for Upright Panel
AH-101 Assist handle: Assist handle
FK-516 Fax board: Super G3 fax, fax functionality for 1st and 2nd line
FK-515 Fax board: Super G3 fax, fax functionality for 3rd and 4th line
MK-742 Fax mount kit: Installation kit for FK-515
IC-418 Image controller: Professional colour print controller
VI-510 Video interface kit: For IC-418, Fiery controller interface card
EK-610 USB I/F kit: USB interface kit
EK-611 USB I/F kit: USB interface kit, Bluetooth LE
SC-508 Security kit: Copy guard function
MK-735 Mount kit: Installation kit for IC card reader
AU-2015 IC card authentication: Various IC card technologies
AU-102 Biometric authentication: Finger vein scanner
KH-102 Keyboard holder: To place USB keyboard
KP-101 10-Key pad: 10-key
UK-215 Wireless LAN: Wireless LAN and wireless LAN Simple Access Point Mode
HD-524 Hard disk mirroring kit: Back-up HDD
LK-102 v3 PDF enhancements: PDF/A, PDF encryption, digital signature
LK-104 v3 Voice guidance: Provides voice guidance functions
LK-105 v4 OCR text recognition: Searchable PDF and PPTX, PDF/A-1a
LK-106 Barcode fonts: Supports native barcode printing
LK-107 Unicode fonts: Supports native Unicode printing
LK-108 OCR A and B fonts: Supports native OCR A and B font printing
LK-110 v2 Document converter pack: Generates various file formats incl. DOCX, XLSX and PDF/A
LK-111 ThinPrint® Client: Print data compression for reduced network impact
LK-115 v2 TPM activation: Trusted Platform Module for protection of data encryption and decryption

All specifications refer to A4-size paper of 80 gsm quality.
The support and availability of the listed specifications and functionalities vary depending on operating systems, applications and network protocols as well as network and system configurations.
Some of the product illustrations contain optional accessories.
Specifications and accessories are based on the information available at the time of printing and are subject to change without notice.
Konica Minolta does not warrant that any specifications mentioned will be error-free.
All brand and product names may be registered trademarks or trademarks of their respective holders and are hereby acknowledged.

For more information please visit the bizhub Web site at
http://bt.konicaminolta.in/bizhub-c759\_C659-product-overview/

KONICA MINOLTA, the KONICA MINOLTA logo and symbol mark, "Giving Shape to Ideas", bizhub, bizhub PRO, bizhub PRESS, magicolor, PagePro, PageScope, Simitri, Simitri HD, Simitri HD+, Simitri with Biomass, Emperon, S.E.A.D., S.E.A.D.II, Printgroove and Konica Minolta Optimised Print Services and their respective logos are registered trademarks or trademarks of KONICA MINOLTA, INC. Evemote is a registered trademark or trademark of Evemote Corporation. SharePoint is a registered trademark or trademark of Microsoft Corporation in the U.S. and other countries. All other brands and product names are registered trademarks or trademarks of their respective companies or organisations.

Ecology & Environment

KONICA MINOLTA products are designed with the environment in mind.

- Energy Star
- RoHS Compliance
- WEEE Compliance
- Eco-friendly Toners



- Please read and follow the instruction manual to ensure safe operation.
- Only operate using appropriate power supply and voltage.
- Connecting the earth wire to an inappropriate place may cause explosion or electric shock. Please connect accordingly.

For more information: SMS "KM OFFICE" send to 52424 or Call: 1-800-266-2525
Konica Minolta Business Solutions India Pvt. Ltd. : 10th Floor, Building No.8, Tower C, DLF Cyber City, Phase II Gurgaon, Haryana - 122002, India. Board No. +91-124 6652000.
URL: www.konicaminolta.in, marcom@bin.konicaminolta.in | Konica Minolta Inc., Tokyo, Japan.
Connect with us : [Social media icons]

Contact Point:

