



Giving Shape to Ideas

KONICA MINOLTA

# PRODUCTIVITY BEYOND IMAGINATION PERFORMANCE ABOVE EXPECTATION

A3 B&W Multifunctional Printer

## bizhub 958/758

<b>bh958</b> B&W <b>95</b> ppm	<b>bh758</b> B&W <b>75</b> ppm	Resolution <b>1,200</b> dpi	<b>SRA3</b>
Dual Scan ADF <b>240</b> opm Duplex	Dual Scan ADF <b>120</b> opm Simplex	<b>USB</b> Print	<b>Fax</b> <small>*1</small>
Colour Internet Fax	<b>IC-Card</b> Authentication <small>*1</small>	<b>Biometric</b> Authentication <small>*1</small>	 INFO-Palette
<b>Mobile</b> Support	 AirPrint	 Google Cloud Print Ready	 PRINT WITH ANDROID
 mopria	 KMPS	<b>Bioplastic</b>	<b>Recycled</b> PC/PET
 Emperon Driven!	 PageScope Mobile	 Simitri with Biomass	



## To Connect with iOS Devices

Search and register nearby MFP into the PageScope Mobile (PSM)<sup>†</sup> via Bluetooth LE (BLE)<sup>†</sup> technology. Additionally, iOS devices can be used to login to MFP through BLE connection. Select files on the PSM<sup>†</sup> to print directly from iOS devices<sup>†</sup> or scan files directly to the iOS devices.

<sup>†</sup>PageScope Mobile for iPhone/iPad version 5.0 or higher is required.

<sup>†</sup>Optional Local Interface Kit EK-611 is required.

<sup>†</sup>Wireless LAN environment is required to perform print and scan.

## To Connect Instantly Without Print Drivers to the Industry Standard Mobile Technologies

iOS



**AirPrint**  
iOS and Mac OS X standard printing technology.

Android

**Mopria Print Service**  
Multi-vendor-compatible application supplied by Mopria Alliance.



Android

**Mopria Print Service**  
Application that enables mobile printing from bizhub.



**Google Cloud Print**

Enable printing via Cloud from Google Cloud Print supported application.

<sup>\*</sup> Google Cloud Print Setup and Google account registration are required.



**PageScope Mobile**

Mobile application supplied by Konica Minolta that enable a wide range of bizhub functions including print, scan, staple and punch.



**Windows 10 Mobile**

## Wireless LAN (AP mode) Support

The MFP becomes a wireless LAN Access Point<sup>†</sup> to allow direct wireless connection between mobile devices and bizhub. Devices brought into the office will be able to directly connect with bizhub and are securely separated from existing company LANs. PageScope Mobile will enable more convenient use, as wireless set up can be completed between a mobile device and bizhub simply by reading the QR code that is displayed on the machine panel.

<sup>†</sup> Optional Upgrade Kit UK-212 is required.

## Advanced security function indispensable when handling increased volumes of input and output

### Authentication on the MFP Main Unit

Authentication can be performed directly on the main unit. Detailed access control can be set up for each function including copy, print, scan, and fax<sup>†</sup>.

<sup>†</sup>Optional FAX Kit FK-516 is required.

### IC Card Authentication

To authenticate<sup>†</sup> with various types of IC card<sup>†</sup>. The authentication method is also compliant with SSFC (Shared Security Formats Cooperation) standard. Besides the IC card, authentication can also be performed with any Android devices<sup>†</sup> that is equipped with NFC antenna.

<sup>†</sup>Optional Authentication Unit AU-2015 is required.

<sup>†</sup>Compliant non-contact IC cards include FeliCa (IDm), SSFC, FCF, FCF (campus), FeliCa Private, and MIFARE (UID).

<sup>†</sup>Requires Android 4.4 or later that supports HCE (Host Card Emulation) or PageScope Mobile for Android v4.1 or later.

### Biometric Authentication

The finger veins become the most accurate authentication tool. The biometric authentication is easy to implement but offering very high-level security.



<sup>\*</sup> Optional Biometric Authentication Unit AU-102, Working Table WT-506 or WT-513 are required.

### Server-less pull printing

Print jobs sent by user can be printed from any MFP in the office print group. To allows user to build a server-less pull printing system easier and with low introduction cost.

<sup>\*</sup> A pull printing system consisting of a maximum of 10 MFPs can be created. It is necessary that all corresponding MFPs be in the same network.

<sup>\*</sup> Optional i-Option LK-114 are required to be installed to each of the MFP.

## High productivity that is ideal for CRDs and High-volume Offices

### Faster Printing Speed

This series achieves significantly fast print/copy speed of 95/75 ppm<sup>†</sup>. This answers to CRDs and high-volume offices' requirement of a speedy large-volume output. Shortening output time enables effective use of time and manpower, resulting in efficiency and cost reduction.



<sup>\*</sup> Printing speed for 958: 95 sheets ppm, 758: 75 sheets ppm (A4 horizontal)

## Simplicity and usability to fit any working environment

### Product Design

The bizhub 958 series adopts "easy and intuitive INFO-Palette" design with smart user interface. This unified design ensures similar user experience across PCs, tablets or smartphones.



INFO-Palette



Top Menu  
Customisable to match applications

Widget Function  
Enables transmission of messages using the Operation Panel

Hard registration keys  
Register up to 4 commonly used function.

### 9-inch Multi Touch Panel

The operation screen features a large anti-static 9-inch multi-touch panel. Frequently used functions can be registered flexibly to enhance the office work performance. A built-in widget function enables to post a textbox, icon or GIF animation.

## Allowing in-house production and faster document handling with multiple functions

### Plenty of Paper Feed Options

The standard paper capacity of the MFP is 3,650 sheets. The optional Large Capacity Unit (maximum of 6,650<sup>†</sup> sheets) improves productivity and reduces paper replenishment time.

<sup>†</sup> When optional Large Capacity Unit LU-303 are mounted.



<sup>†</sup>The paper supply capacity for all models is based on 80g/m2.

## Large Capacity and High-Speed ADF

A single pass document feeder is mounted as standard, and it enables 240 opm<sup>†</sup> scanning in colour. Up to 300 original documents can be loaded. Advanced scanning technology enhances scan quality and a large volume of scanning job can be processed quickly.

120 opm  
for simplex  
documents

240opm  
for duplex  
documents



<sup>†</sup> At 300dpi, 2-sided

## Finisher [FS-537/FS-537SD]<sup>†</sup>

The compact and multi-function finisher [FS-537/FS-537SD] is newly developed, and a Z-fold unit [ZU-609] can fit into the finisher. FS-537/FS-537SD is capable of handling a wide range of post-processing like saddle-stitch, punch, staple, Z-fold and tri-fold to provide a high-quality finish.

<sup>†</sup> Optional

Post Inserter [PI-507]  
Z-fold Unit [ZU-609]  
Punch Kit [PK-523]

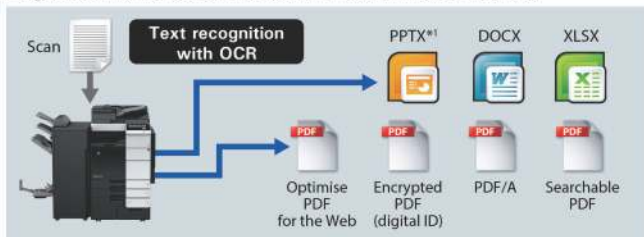
Saddle stitcher  
Finisher  
[FS-537SD]



## Document Digitalisation

Paper documents can be scanned and converted into PDF and OOXML (pptx, docx, xlsx) file formats. Choose a file format suitable for the work objective to widen the potential of documents for secondary usage.

Image of Scan to PDF and Scan to OOXML (when LK-110 v2 is mounted)



\* OCR processing enables text searching.

\* Images and text can be reused in applications such as Microsoft Office.

\* Although pptx conversion is a standard function of this machine, optional i-Option LK-105 v4 or LK-110 v2 are required to use OCR.

## Not just heavy use but flexible mobile connectivity

### To Connect with Android Devices

The new Mobile Touch Area on the operation panel is ready to support NFC (Near Field Communication) connection with Android<sup>™</sup> devices. Touch the area with Android device to perform pairing through the PageScope Mobile (PSM). Select files on the PSM, then touch the device to the operation panel to perform print<sup>†</sup> or touch the device to the operation panel to perform scan<sup>‡</sup>.

<sup>†</sup>NFC connection requires Android OS 4.4 or higher to be installed.

<sup>‡</sup>Wireless LAN environment is required to perform touch to print and scan.



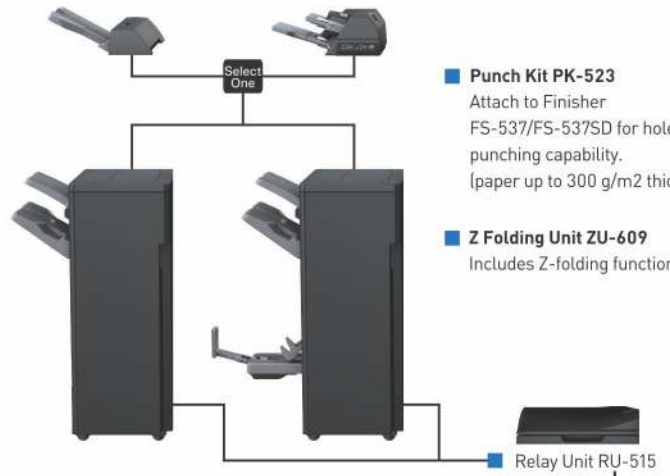
### Job Separator JS-602\*1

When attached to the FS-537/FS-537SD, this becomes the fax/print/copy output separator tray.

### Post Inserter PI-507\*1

When attached to Finisher FS-537/FS-537SD, allows you to add white paper cover sheet/inter sheet, and operate the Finisher

\*1 PI-507 and JS-602 cannot be installed at the same time



### Punch Kit PK-523

Attach to Finisher FS-537/FS-537SD for hole punching capability. (paper up to 300 g/m2 thick)

### Z Folding Unit ZU-609

Includes Z-folding function.

### Finisher FS-537

A high-performance finisher that allows you to multi-staple up to 100 sheets.

### Finisher FS-537SD

A high-performance finisher that allows you to multi-staple, saddle stitching, half folding and tri-folding.

### Relay Unit RU-515

### Staple Kit MS-10A

\* for FS-537/FS-537SD

### Staple Kit SK-602

\* for FS-536/  
FS-536SD/FS-537SD

### Punch Kit PK-520

Attach to Finishers FS-536/FS-536SD for hole punching capability (paper up to 300 g/m2 thick)

### Finisher FS-536

A small, low-noise and high-performance finisher that allows you to multi-staple up to 50 sheets.

### Finisher FS-536SD

A small, low-noise and high-performance finisher that allows you to multi-staple, saddle stitching, half folding and tri-folding.

### Upgrade kit UK-212

Wireless LAN kit

### Local Interface Kit EK-610

USB hub kit / Voice guidance

### Local Interface Kit EK-611

USB hub kit / Voice guidance / mobile phone compatibility

### Keypad KP-101

### Keyboard Holder KH-102

### Security Kit SC-508

\* Two SC-508 are required.

### Fax Kit FK-516

For 1st / 2nd line

### Fax Kit FK-515

For 3rd / 4th line

\* MK-742 is required.

### Fax Mount Kit MK-742

### Stamp Unit SP-501

### Hard Disk HD-524

For Mirroring

### Double Feed Detection Kit UK-501

For ADF

### Working Table WT-513

For Upright Panel

### Working Table WT-506

### Authentication Unit AU-102

Biometric type

\* WT-506 or WT-513 is required.

### Authentication Unit AU-201S IC card type

WT-506 or MK-735 is required. However, AU-102 cannot be combined when equipped with WT-506.

### Mount Kit MK-735

For IC card authentication installation Built into front pane

### Banner Paper

Setting Guide MK-715 Used for banner printing.

### Output Tray OT-508

### Large Capacity Unit LU-205

Increases the bizhub's paper capacity by 2,500 sheets for paper up to SRA3 and 80 g/m2 thick.

### Large Capacity Unit LU-303

Increases the bizhub's paper capacity by 3,000 sheets for paper up to A4 size and 80 g/m2 thick.

Select One One of the options may be selected (not mandatory)

Must Select One of the options must be selected (mandatory)

\*Optional

Printer Specifications

Type	Embedded						
CPU	MB86S72 (1.6GHz)						
Memory	4 GB						
Print Speed	Same as Copy Speed (when using the same original)						
HDD	250GB						
Print Resolution	1,800 dpi (equivalent) × 600 dpi (at smoothing) or 1,200 dpi × 1,200 dpi (in 1,200 dpi mode)*1						
PDL	PCL6 Emulation, PCL6 (XL ver. 3.0) Emulation, PostScript 3 Emulation (3016), XPS (Ver. 1.0)						
Protocol	TCPIP (LDP, Raw, SMB, IPP), AppleTalk, IPX/SPX						
Support OS	<table border="1"> <tr> <td>PCL</td> <td>Windows Vista**/7**/8.1**/10** Windows 2008**/2008 R2 / Server 2012 / Server 2012 R2</td> </tr> <tr> <td>PS</td> <td>Windows Vista**/7**/8.1**/10** Windows 2008**/2008 R2 / Server 2012 / Server 2012 R2 Mac OS X 10.7 / X 10.8 / X 10.9 / X 10.10 / X 10.11 (Intel) Linux</td> </tr> <tr> <td>XPS</td> <td>Windows Vista**/7**/8.1**/10** Windows 2008**/2008 R2 / Server 2012 / Server 2012 R2</td> </tr> </table>	PCL	Windows Vista**/7**/8.1**/10** Windows 2008**/2008 R2 / Server 2012 / Server 2012 R2	PS	Windows Vista**/7**/8.1**/10** Windows 2008**/2008 R2 / Server 2012 / Server 2012 R2 Mac OS X 10.7 / X 10.8 / X 10.9 / X 10.10 / X 10.11 (Intel) Linux	XPS	Windows Vista**/7**/8.1**/10** Windows 2008**/2008 R2 / Server 2012 / Server 2012 R2
PCL	Windows Vista**/7**/8.1**/10** Windows 2008**/2008 R2 / Server 2012 / Server 2012 R2						
PS	Windows Vista**/7**/8.1**/10** Windows 2008**/2008 R2 / Server 2012 / Server 2012 R2 Mac OS X 10.7 / X 10.8 / X 10.9 / X 10.10 / X 10.11 (Intel) Linux						
XPS	Windows Vista**/7**/8.1**/10** Windows 2008**/2008 R2 / Server 2012 / Server 2012 R2						
Fonts	<table border="1"> <tr> <td>PCL</td> <td>European 80 fonts</td> </tr> <tr> <td>PS</td> <td>European 137 fonts</td> </tr> </table>	PCL	European 80 fonts	PS	European 137 fonts		
PCL	European 80 fonts						
PS	European 137 fonts						
Interface	Ethernet (1000BaseT / 100BaseTX / 10BaseT), USB 2.0 / 1.1						

\*1 Output speed will be reduced.  
\*2 Supports the 32bit (x86) or 64bit (x64) environment.

Scanning Function Specifications

Type	Full-Colour Scanner				
Interface	Ethernet (100BASE-T/100BASE-TX/1000BASE-T)				
Driver	TWAIN Driver, HDD TWAIN Driver				
Protocol	TCPIP (FTP, SMB, SMT, WebDAV) (IPv4/IPv6)				
Scanning Speed *1	<table border="1"> <tr> <td>Simplex</td> <td>120 opm</td> </tr> <tr> <td>Duplex</td> <td>240 opm</td> </tr> </table>	Simplex	120 opm	Duplex	240 opm
Simplex	120 opm				
Duplex	240 opm				
Scanning Size (Colour/B&W)	Max. A3 (11" × 17")				
Output Format	TIF, JPEG, PDF, Compact PDF, XPS, Compact XPS, OOXML (pptx, xlsx**, docx**), Searchable PDF**, PDF/A**, Linearised PDF**				
Scanning Resolution	<table border="1"> <tr> <td>Push</td> <td>200 dpi / 300 dpi / 400 dpi / 600 dpi</td> </tr> <tr> <td>Pull</td> <td>100 dpi / 200 dpi / 300 dpi / 400 dpi / 600 dpi</td> </tr> </table>	Push	200 dpi / 300 dpi / 400 dpi / 600 dpi	Pull	100 dpi / 200 dpi / 300 dpi / 400 dpi / 600 dpi
Push	200 dpi / 300 dpi / 400 dpi / 600 dpi				
Pull	100 dpi / 200 dpi / 300 dpi / 400 dpi / 600 dpi				
Main Functions	Scan to E-Mail, Scan to FTP, Scan to BOX (HDD), Scan to PC (SMB), Network TWAIN, Scan to WebDAV, Scan to Me, Scan to Home, Scan to USB, Scan to Scan Server, Scan to Web Service (WSD-Scan), Device Profile for Web Services (DPWS)				
Other Functions	Multi-Method Send, Authentication at the time of E-Mail send (SMTP authentication, POP before SMTP), S/MIME, Annotation				
Supported operating systems**	Windows Vista / 7 / 8.1 / 10				

\*1 Speed when scanning A4 original in 300 dpi or less by using the ADF.  
\*2 Optional  
\*3 Supports the 32bit (x86) or 64bit (x64) environment.

General Specifications

		bizhub 958	bizhub 758
Type	Console		
Copy	Scan	Main: 600dpi × Sub: 600dpi	
Resolution	Print	1,800 dpi (equivalent) × 600 dpi	
Gradation		256	
Memory size		4 GB	
HDD		250 GB	
Original Type		Sheets, Books, Objects	
Max. Original Size		A3 (11" × 17")	
Output Size		Main unit: SRA3*1, A3 to A5, 12-1/4" × 18" (A3 wide (311.1 mm × 457.2 mm)), 12" × 18" (A3 wide (304.8 mm × 457.2 mm)), 11" × 17" to 8-1/2" × 11", 5-1/2" × 8-1/2", 8" × 13**1, 16K**1, 8K, Postcard, Bypass Tray: SRA3, A3 to A5, B6**1, A6**1, 12" × 18" (A3 wide (304.8 mm × 457.2 mm)), 11" × 17" to 5-1/2" × 8-1/2", 8" × 13" **1, 16K, 8K, Postcard (A6 (4" × 6" Card)), Envelope**1, Index paper, Banner paper (Width: 210 mm to 297 mm (8-1/4" to 11-11/16"), Length: 457 mm to 1,200 mm (18" to 47-1/4")**1)	
Image Loss		Max. 4.2mm or less for top edge (5 mm for thin paper), Max. 3.0mm or less for bottom edge, Max. 3.0mm or less for right/left edges *A loss of 4.2 mm each during printing.	
Warm-Up Time** (23°C, std. voltage)		55 sec. or less	22 sec. or less
	*The time required to start printing when both the main power and sub-power switches are turned from OFF to ON.		
	*The time required to start printing when the main power switch is ON and the sub-power switch is turned from OFF to ON.	55 sec. or less	22 sec. or less
First Copy Out Time**		3.2 sec. or less	3.6 sec. or less
Copy Speed (A4)		95 ppm	75 ppm
Copy Magnification	Fixed Same Magnification	1: 1±0.5% or less	
	Scaling Up	1: 1.154/1.224/1.414/2.000	
	Scaling Down	1: 0.866/0.816/0.707/0.500	
	Presets	3 types	
	Zoom	25 to 400% (in 0.1% increments)	
	Lengthwise Crosswise Individual Settings	25 to 400% (in 0.1% increments)	
Paper Capacity	Tray 1 / Tray 2	500 sheets (up to SRA3)	
	Tray 3	1,500 sheets (up to A4)	
	Tray 4	1,000 sheets (up to A4)	
	Bypass Tray	150 sheets (up to SRA3)	
Max. Paper Capacity (80 g/m <sup>2</sup> ) *10		6,650 sheets	
Paper Weight **1	Main Unit	52 to 256 g/m <sup>2</sup>	
	Multiple Bypass Tray	52 to 300 g/m <sup>2</sup>	
Multiple Copy		1 to 9,999 sheets	

Auto Duplex	Paper Size	SRA3, A3 to A5, B6**1, A6**1, 12-1/4" × 18" (A3 wide (311.1 mm × 457.2 mm)), 12" × 18" (A3 wide (304.8 mm × 457.2 mm)), 11" × 17" to 5-1/2" × 8-1/2", 8" × 13", 16K, 8K, Postcard (A6 (4" × 6" Card))
	Paper Weight	52 to 256 g/m <sup>2</sup>
Power Requirements	AC220 to 240 V	AC220 to 240 V 10 A (50/60 Hz)
	15 A (50/60 Hz)	
Max. Power Consumption	3.6 kW or less	2.1 kW or less
Dimensions [W] × [D] × [H]	670 × 820 × 1,232 mm (26-3/8" × 32-5/16" × 48-1/2")	*Main unit + ADF
Weight	Approx. 210 kg (440-15/16 lb)	
Space Requirements [W] × [D]**2	1,008 × 1,419 mm (39-1/16" × 55-7/8")	

\*1 SRA3 paper can be used in Tray2.  
\*2 There are four types of footscap: 8-1/2" × 13-1/2" , 8-1/2" × 13" , 8-1/4" × 13" , and 8" × 13" . Any one of these sizes is selectable. For details, contact your service representative.  
\*3 Long edge feed   
\*4 Short edge feed   
\*5 There are six types of footscap: 8-1/2" × 13-1/2" , 220 mm × 330 mm , 8-1/2" × 13" , 8-1/4" × 13" , 8-1/8" × 13-1/4" , and 8" × 13" . Any one of these sizes is selectable. For details, contact your service representative.  
\*6 Wrinkles or printing errors may occur due to the type, storage or environment that exists when envelope printing is carried out.  
\*7 Printing on banner paper can only be performed from a PC.  
\*8 May vary depending on the operating environment and usage.  
\*9 A4 long edge feed full size/using the first tray/scanning from the original glass surface.  
\*10 With options installed.  
\*11 If paper of 210 g/m<sup>2</sup> or more is used, the resulting image quality may not be as expected.  
\*12 This shows the dimensions when the Paper Trays are pulled out and the Tray Extension of the Bypass Tray is opened.

Dual Scan Document Feeder

Type	Dual Scan Document Feeder				
Support Paper Size	Max. A3 (Fax mode: Max. 1,000 mm)				
Mixed Size	Support				
Original Set	Centre guide				
Support Paper Weight	Thin paper: 35 to 49 g/m <sup>2</sup> (Simplex) Plain paper: 50 to 210 g/m <sup>2</sup> (Simplex/Duplex), 50 to 128 g/m <sup>2</sup> (Mixed Original) Max. 300 sheets (80 g/m <sup>2</sup> )				
Paper Capacity					
Productivity**	<table border="1"> <tr> <td>Simplex</td> <td>Colour/B&amp;W: 80 opm</td> </tr> <tr> <td>Duplex</td> <td>Colour/B&amp;W: 160 opm</td> </tr> </table>	Simplex	Colour/B&W: 80 opm	Duplex	Colour/B&W: 160 opm
Simplex	Colour/B&W: 80 opm				
Duplex	Colour/B&W: 160 opm				
Power Requirements	Supplied from the MFP main body				
Dimensions [W] × [D] × [H]	618 × 575 × 180 mm (24-5/16" × 22-5/8" × 7-1/16")				
Weight	Approx. 15.1 kg (33-5/16 lb)				

\*1 When copying A4, resolution 600 dpi.

Fax Kit FK-516, Fax Kit FK-515 (Optional)

Communication	Super G3
Compatible Lines	Public Switch Telephone Network, Private Branch Exchange, Fax Communication Line
Line Density	G3 (8 dot/mm × 3.85 line/mm, 600 × 600 dpi)
Modem Speed	2.4 to 33.6 kbps
Compression	MH/MR/MMR/JBIG
Sending Paper Size	Max. A3 (Long Length Support: Max. 1,000 mm)
Recording Paper Size	Max. A3 (Long Length Max. 1,000 mm – following the page division)
Transmission Speed	Less than 3 sec. (A4, V.34, 33.6 kbps, JBIG)
Memory	Shared with the copier
Number of Abbr. Dials	2,000
Number of Program Dials	400
Number of Group Dials	100
Sequential Multiple Station Transmission	Max. 600

Large Capacity Unit LU-303 (Optional)

Support Paper Type (Weight)	Thin paper (52 to 59 g/m <sup>2</sup> ), Plain paper (60 to 90 g/m <sup>2</sup> ), Thick paper (91 to 256 g/m <sup>2</sup> )
Support Paper Size	A4**1, 8-1/2" × 11" **1
Paper Capacity	Plain paper: 3,000 sheets (80 g/m <sup>2</sup> )/3,300 sheets (60 g/m <sup>2</sup> ) Thick paper 1: 2,500 sheets, Thick paper 1+: 1,750 sheets, Thick paper 2: 1,550 sheets, Thick paper 3: 1,300 sheets
Power Requirements	Supplied from the MFP main body
Max. Power Consumption	40 W or less
Dimensions [W] × [D] × [H]	367 × 526 × 405 mm (14-7/16" × 20-13/16" × 15-15/16")
Weight	Approx. 18 kg (39-1/16 lb)

\*1 Long edge feed   
\* Thick paper 1: 91 to 120 g/m<sup>2</sup>, Thick paper 1+: 121 to 157 g/m<sup>2</sup>, Thick paper 2: 158 to 209 g/m<sup>2</sup>, Thick paper 3: 210 to 256 g/m<sup>2</sup>

Large Capacity Unit LU-205 (Optional)

Support Paper Type (Weight)	Thin paper (52 to 59 g/m <sup>2</sup> ), Plain paper (60 to 90 g/m <sup>2</sup> ), Thick paper (91 to 256 g/m <sup>2</sup> )
Support Paper Size**1	SRA3 to A4, 12" × 18" to 8-1/2" × 11"
Paper Capacity	Plain paper: 2,500 sheets (80 g/m <sup>2</sup> )/2,750 sheets (60 g/m <sup>2</sup> ) Thick paper 1: 2,000 sheets, Thick paper 1+: 1,450 sheets, Thick paper 2: 1,250 sheets, Thick paper 3: 1,000 sheets
Power Requirements	Supplied from the MFP main body
Max. Power Consumption	40 W or less
Dimensions [W] × [D] × [H]	629 × 556 × 405 mm (24-3/4" × 21-7/8" × 15-15/16")
Weight	Approx. 25 kg (55-1/8 lb)

\*1 The maximum number of loadable sheets for each paper size is 2,500 sheets (for 80 g/m<sup>2</sup>) or 2,750 sheets (for 60 g/m<sup>2</sup>).  
\* Thick paper 1: 91 to 120 g/m<sup>2</sup>, Thick paper 1+: 121 to 157 g/m<sup>2</sup>, Thick paper 2: 158 to 209 g/m<sup>2</sup>, Thick paper 3: 210 to 256 g/m<sup>2</sup>

For more information please visit the bizhub Web site at <http://bt.konicaminolta.in/bizhub-958-758-product-overview/>

Product Appearance, Configuration And/or Specifications Are Subject To Change Without Notice.

KONICA MINOLTA, the KONICA MINOLTA logo and symbol mark, "Giving Shape to Ideas", bizhub, bizhub PRO, bizhub PRESS, magicolor, PagePro, PageScope, Simitri, Simitri HD, Simitri HD+, Simitri with Biomass, Emperon, S.E.A.D., S.E.A.D.II, Printgroove and Konica Minolta Optimised Print Services and their respective logos are registered trademarks or trademarks of KONICA MINOLTA, INC. Evernote is a registered trademark or trademark of Evernote Corporation. SharePoint is a registered trademark or trademark of Microsoft Corporation in the U.S. and other countries. All other brands and product names are registered trademarks or trademarks of their respective companies or organisations.



Ecology & Environment

KONICA MINOLTA products are designed with the environment in mind.

- Energy Star
- RoHS Compliance
- WEEE Compliance
- Eco-friendly Toners



- Please read and follow the instruction manual to ensure safe operation.
- Only operate using appropriate power supply and voltage.
- Connecting the earth wire to an inappropriate place may cause explosion or electric shock. Please connect accordingly.

For more information: SMS "KM OFFICE" send to 52424 or Call: 1-800-266-2525  
**Konica Minolta Business Solutions India Pvt. Ltd.** : 10<sup>th</sup> Floor, Building No.8, Tower C, DLF Cyber City, Phase II Gurgaon, Haryana - 122002, India. Board No. +91-124 6652000.  
 URL: [www.konicaminolta.in](http://www.konicaminolta.in), [marcom@bin.konicaminolta.in](mailto:marcom@bin.konicaminolta.in) | Konica Minolta Inc., Tokyo, Japan.

Connect with us : YouTube



Contact Point:

